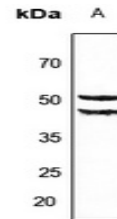


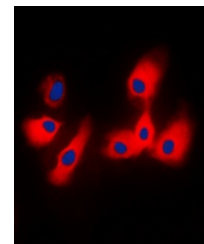
Product Datasheet

CYP2A6 antibody (orb216084)

Description	Rabbit polyclonal antibody to Cytochrome P450 2A6
Species/Host	Rabbit
Reactivity	Human, Rat
Conjugation	Unconjugated
Tested Applications	IF, WB
Immunogen	KLH-conjugated synthetic peptide encompassing a sequence within the N-term region of human Cytochrome P450 2A6. The exact sequence is proprietary.
Target	CYP2A6
Preservatives	Liquid in 0.42% Potassium phosphate, 0.87% Sodium chloride, pH 7.3, 30% glycerol, and 0.01% sodium azide.
Form/Appearance	Liquid in 0.42% Potassium phosphate, 0.87% Sodium chloride, pH 7.3, 30% glycerol, and 0.01% sodium azide.
Storage	Maintain refrigerated at 2-8°C for up to 2 weeks. For long term storage store at -20°C in small aliquots to prevent freeze-thaw cycles.
Note	For research use only
Clonality	Polyclonal
Source	Rabbit
Uniprot ID	P11509
Entrez	1548
Dilution Range	WB: 1:500-1:1000, IF/ICC: 1:100-1:500
Expiration Date	12 months from date of receipt.



Western blot analysis of Cytochrome P450...



Immunofluorescent analysis of Cytochrome...