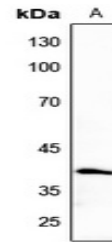


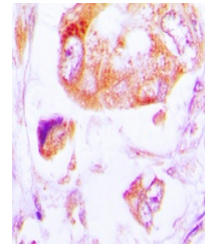
Product Datasheet

CSNK1A1 antibody (orb216077)

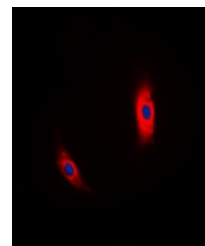
Description	Rabbit polyclonal antibody to CK1 alpha
Species/Host	Rabbit
Reactivity	Human, Mouse, Rabbit, Rat, Sheep
Conjugation	Unconjugated
Tested Applications	IF, IH, WB
Immunogen	KLH-conjugated synthetic peptide encompassing a sequence within the center region of human CK1 alpha. The exact sequence is proprietary.
Target	CSNK1A1
Preservatives	Liquid in 0.42% Potassium phosphate, 0.87% Sodium chloride, pH 7.3, 30% glycerol, and 0.01% sodium azide.
Form/Appearance	Liquid in 0.42% Potassium phosphate, 0.87% Sodium chloride, pH 7.3, 30% glycerol, and 0.01% sodium azide.
Storage	Maintain refrigerated at 2-8°C for up to 2 weeks. For long term storage store at -20°C in small aliquots to prevent freeze-thaw cycles.
Note	For research use only
Clonality	Polyclonal
Source	Rabbit
Uniprot ID	Q8BK63 , P97633 , P48729
Entrez	93687 , 113927 , 1452
Dilution Range	WB: 1:500-1:1000, IHC-P: 1:100-1-200, IF/ICC: 1:100-1:500
Expiration Date	12 months from date of receipt.



Western blot analysis of CK1 alpha expression.



Immunohistochemical analysis of CK1 alpha.



Immunofluorescent analysis of CK1 alpha.