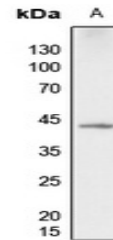


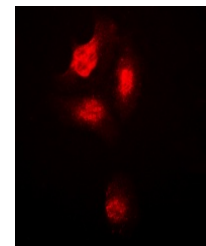
Product Datasheet

MAPK14 antibody (orb216074)

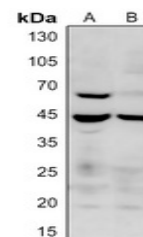
Description	Rabbit polyclonal antibody to p38 (Phospho-T180)
Species/Host	Rabbit
Reactivity	Human, Mouse, Rat, Zebrafish
Conjugation	Unconjugated
Tested Applications	IF, WB
Immunogen	KLH-conjugated synthetic phosphopeptide corresponding to residues surrounding T180 of human p38 protein. The exact sequence is proprietary.
Target	MAPK14
Preservatives	Liquid in 0.42% Potassium phosphate, 0.87% Sodium chloride, pH 7.3, 30% glycerol, and 0.01% sodium azide.
Form/Appearance	Liquid in 0.42% Potassium phosphate, 0.87% Sodium chloride, pH 7.3, 30% glycerol, and 0.01% sodium azide.
Storage	Maintain refrigerated at 2-8°C for up to 2 weeks. For long term storage store at -20°C in small aliquots to prevent freeze-thaw cycles.
Note	For research use only
Clonality	Polyclonal
Source	Rabbit
Uniprot ID	P47811 , P70618 , Q16539
Entrez	1432 , 26416
Dilution Range	WB: 1:500-1:1000, IF/ICC: 1:100-1:500, IP: 1:10-1:100
Expiration Date	12 months from date of receipt.



Western blot analysis of p38 (Phospho-T180)



Immunofluorescent analysis of p38 (Phospho-T180)



Western blot analysis of p38 (Phospho-T180)