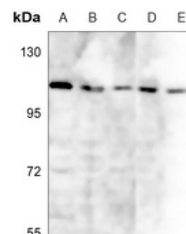


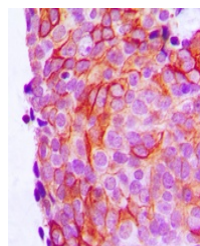
Product Datasheet

Cadherin-17 antibody (orb216056)

Description	Rabbit polyclonal antibody to Cadherin-17
Species/Host	Rabbit
Reactivity	Human
Conjugation	Unconjugated
Tested Applications	IF, IH, WB
Immunogen	KLH-conjugated synthetic peptide encompassing a sequence within the center region of human LI Cadherin. The exact sequence is proprietary.
Target	CDH17
Preservatives	Liquid in 0.42% Potassium phosphate, 0.87% Sodium chloride, pH 7.3, 30% glycerol, and 0.01% sodium azide.
Form/Appearance	Liquid in 0.42% Potassium phosphate, 0.87% Sodium chloride, pH 7.3, 30% glycerol, and 0.01% sodium azide.
Storage	Maintain refrigerated at 2-8°C for up to 2 weeks. For long term storage store at -20°C in small aliquots to prevent freeze-thaw cycles.
Note	For research use only
Clonality	Polyclonal
Source	Rabbit
Uniprot ID	Q12864
Entrez	1015
Dilution Range	WB: 1:500-1:1000, IHC-P: 1:100-1-200
Expiration Date	12 months from date of receipt.



Western blot analysis of LI Cadherin exp...



Immunohistochemical analysis of LI Cadhe...



Immunofluorescent analysis of LI Cadheri...