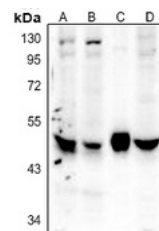


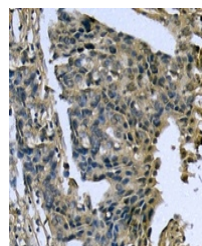
Product Datasheet

CASP4 antibody (orb216043)

Description	Rabbit polyclonal antibody to Caspase 4 p20
Species/Host	Rabbit
Reactivity	Human, Mouse, Rat
Conjugation	Unconjugated
Tested Applications	IF, IH, WB
Immunogen	KLH-conjugated synthetic peptide encompassing a sequence within the center region of human Caspase 4. The exact sequence is proprietary.
Target	CASP4
Preservatives	Liquid in 0.42% Potassium phosphate, 0.87% Sodium chloride, pH 7.3, 30% glycerol, and 0.01% sodium azide.
Form/Appearance	Liquid in 0.42% Potassium phosphate, 0.87% Sodium chloride, pH 7.3, 30% glycerol, and 0.01% sodium azide.
Storage	Maintain refrigerated at 2-8°C for up to 2 weeks. For long term storage store at -20°C in small aliquots to prevent freeze-thaw cycles.
Note	For research use only
Clonality	Polyclonal
Source	Rabbit
Uniprot ID	P49662
Entrez	837
Dilution Range	WB: 1:500-1:1000
Expiration Date	12 months from date of receipt.

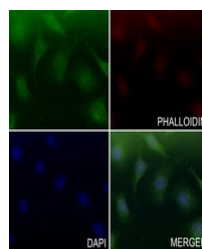


Western blot analysis of Caspase 4 expression.



Immunohistochemical analysis of Caspase 4 expression.

...



Immunofluorescent analysis of Caspase 4 expression.

...