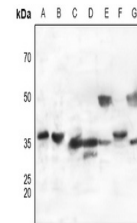


Product Datasheet

ATP1B3 antibody (orb216027)

Description	Rabbit polyclonal antibody to CD298
Species/Host	Rabbit
Reactivity	Human, Mouse, Primate, Rat
Conjugation	Unconjugated
Tested Applications	WB
Immunogen	KLH-conjugated synthetic peptide encompassing a sequence within the center region of human CD298. The exact sequence is proprietary.
Target	ATP1B3
Preservatives	Liquid in 0.42% Potassium phosphate, 0.87% Sodium chloride, pH 7.3, 30% glycerol, and 0.01% sodium azide.
Form/Appearance	Liquid in 0.42% Potassium phosphate, 0.87% Sodium chloride, pH 7.3, 30% glycerol, and 0.01% sodium azide.
Storage	Maintain refrigerated at 2-8°C for up to 2 weeks. For long term storage store at -20°C in small aliquots to prevent freeze-thaw cycles.
Note	For research use only
Clonality	Polyclonal
Source	Rabbit
Uniprot ID	P54709 , Q63377 , P97370
Entrez	483 , 25390 , 11933
Dilution Range	WB: 1:500-1:1000, IP: 1:10-1:100
Expiration Date	12 months from date of receipt.



Western blot analysis of CD298 expression...