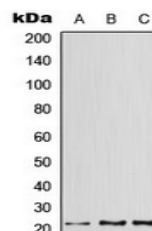


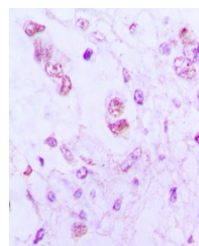
Product Datasheet

ATF3 antibody (orb216025)

Description	Rabbit polyclonal antibody to ATF3
Species/Host	Rabbit
Reactivity	Human, Mouse, Porcine, Rat
Conjugation	Unconjugated
Tested Applications	IH, WB
Immunogen	KLH-conjugated synthetic peptide encompassing a sequence within the C-term region of human ATF3. The exact sequence is proprietary.
Target	ATF3
Preservatives	Liquid in 0.42% Potassium phosphate, 0.87% Sodium chloride, pH 7.3, 30% glycerol, and 0.01% sodium azide.
Form/Appearance	Liquid in 0.42% Potassium phosphate, 0.87% Sodium chloride, pH 7.3, 30% glycerol, and 0.01% sodium azide.
Storage	Maintain refrigerated at 2-8°C for up to 2 weeks. For long term storage store at -20°C in small aliquots to prevent freeze-thaw cycles.
Note	For research use only
Clonality	Polyclonal
Source	Rabbit
Uniprot ID	P18847 , Q60765 , P29596
Entrez	11910 , 467 , 25389
Dilution Range	WB: 1:500-1:1000, IHC-P: 1:100-1:200
Expiration Date	12 months from date of receipt.



Western blot analysis of ATF3 expression...



Immunohistochemical analysis of ATF3 sta...