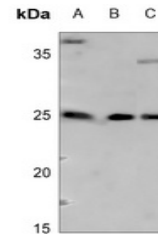


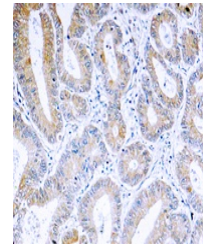
Product Datasheet

ARF4 antibody (orb216021)

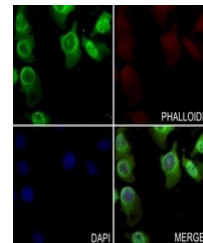
Description	Rabbit polyclonal antibody to ARF4
Species/Host	Rabbit
Reactivity	Human, Mouse, Primate, Rat
Conjugation	Unconjugated
Tested Applications	IF, IH, WB
Immunogen	KLH-conjugated synthetic peptide encompassing a sequence within the center region of human ARF4. The exact sequence is proprietary.
Target	ARF4
Preservatives	Liquid in 0.42% Potassium phosphate, 0.87% Sodium chloride, pH 7.3, 30% glycerol, and 0.01% sodium azide.
Form/Appearance	Liquid in 0.42% Potassium phosphate, 0.87% Sodium chloride, pH 7.3, 30% glycerol, and 0.01% sodium azide.
Storage	Maintain refrigerated at 2-8°C for up to 2 weeks. For long term storage store at -20°C in small aliquots to prevent freeze-thaw cycles.
Note	For research use only
Clonality	Polyclonal
Source	Rabbit
Uniprot ID	P61751, P18085, P61750
Entrez	79120, 11843, 378
Dilution Range	WB: 1:500-1:1000, IHC-P: 1:100-1-200, IP: 1:10-1:100
Expiration Date	12 months from date of receipt.



Western blot analysis of ARF4 expression...



Immunohistochemical analysis of ARF4 sta...



Immunofluorescent analysis of ARF4 stain...