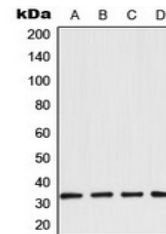


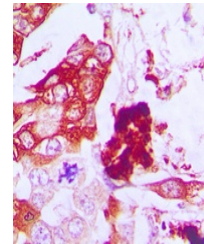
Product Datasheet

Aquaporin 3 antibody (orb216020)

Description	Rabbit polyclonal antibody to Aquaporin 3
Species/Host	Rabbit
Reactivity	Human, Mouse, Porcine, Primate, Rat, Sheep, Zebrafish
Conjugation	Unconjugated
Tested Applications	IH, WB
Immunogen	KLH-conjugated synthetic peptide encompassing a sequence within the center region of human Aquaporin 3. The exact sequence is proprietary.
Target	AQP3
Preservatives	Liquid in 0.42% Potassium phosphate, 0.87% Sodium chloride, pH 7.3, 30% glycerol, and 0.01% sodium azide.
Form/Appearance	Liquid in 0.42% Potassium phosphate, 0.87% Sodium chloride, pH 7.3, 30% glycerol, and 0.01% sodium azide.
Storage	Maintain refrigerated at 2-8°C for up to 2 weeks. For long term storage store at -20°C in small aliquots to prevent freeze-thaw cycles.
Note	For research use only
Clonality	Polyclonal
Source	Rabbit
Uniprot ID	P47862 , Q8R2N1 , Q92482
Entrez	360 , 11828 , 65133
Dilution Range	WB: 1:500-1:1000, IHC-P: 1:100-1-200
Expiration Date	12 months from date of receipt.



Western blot analysis of Aquaporin 3 exp...



Immunohistochemical analysis of Aquapori...