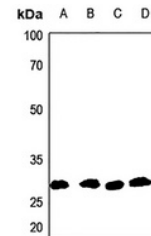


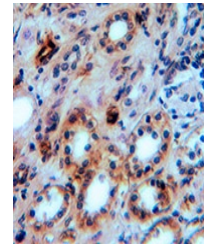
Product Datasheet

Aquaporin 1 antibody (orb216019)

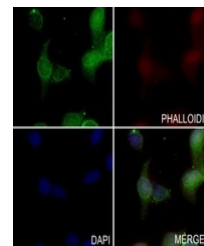
| | |
|----------------------------|--|
| Description | Rabbit polyclonal antibody to Aquaporin 1 |
| Species/Host | Rabbit |
| Reactivity | Human, Mouse, Primate, Rat |
| Conjugation | Unconjugated |
| Tested Applications | IF, IH, WB |
| Immunogen | KLH-conjugated synthetic peptide encompassing a sequence within the center region of human Aquaporin 1. The exact sequence is proprietary. |
| Target | AQP1 |
| Preservatives | Liquid in 0.42% Potassium phosphate, 0.87% Sodium chloride, pH 7.3, 30% glycerol, and 0.01% sodium azide. |
| Form/Appearance | Liquid in 0.42% Potassium phosphate, 0.87% Sodium chloride, pH 7.3, 30% glycerol, and 0.01% sodium azide. |
| Storage | Shipped at 4°C. Upon delivery aliquot and store at -20°C for one year. Avoid freeze/thaw cycles. |
| Note | For research use only |
| Clonality | Polyclonal |
| Source | Rabbit |
| Uniprot ID | P29972 , Q02013 , P29975 |
| Entrez | 25240 , 358 , 11826 |
| Dilution Range | WB: 1:500-1:1000 |
| Expiration Date | 12 months from date of receipt. |



Western blot analysis of Aquaporin 1 exp...



Immunohistochemical analysis of Aquaporin...



Immunofluorescent analysis of Aquaporin ...