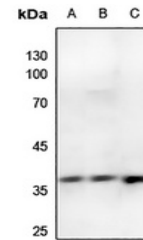


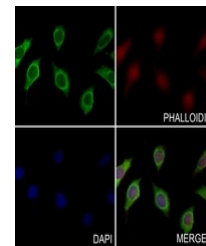
Product Datasheet

ANXA2 antibody (orb216015)

Description	Rabbit polyclonal antibody to Annexin A2 (Phospho-S26)
Species/Host	Rabbit
Reactivity	Human, Mouse, Primate, Rat, Sheep
Conjugation	Unconjugated
Tested Applications	IF, WB
Immunogen	KLH-conjugated synthetic phosphopeptide corresponding to residues surrounding S26 of human Annexin A2 protein. The exact sequence is proprietary.
Target	ANXA2
Preservatives	Liquid in 0.42% Potassium phosphate, 0.87% Sodium chloride, pH 7.3, 30% glycerol, and 0.01% sodium azide.
Form/Appearance	Liquid in 0.42% Potassium phosphate, 0.87% Sodium chloride, pH 7.3, 30% glycerol, and 0.01% sodium azide.
Storage	Maintain refrigerated at 2-8°C for up to 2 weeks. For long term storage store at -20°C in small aliquots to prevent freeze-thaw cycles.
Note	For research use only
Clonality	Polyclonal
Source	Rabbit
Uniprot ID	Q07936 , P07356 , P07355
Entrez	56611 , 12306 , 302
Dilution Range	WB: 1:500-1:1000, IP: 1:10-1:100
Expiration Date	12 months from date of receipt.



Western blot analysis of Annexin A2 (Pho...



Immunofluorescent analysis of Annexin A2...