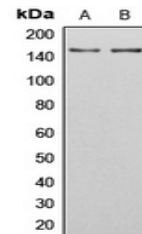


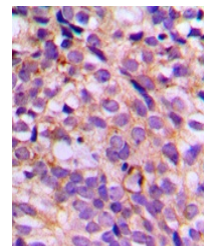
Product Datasheet

SGK223 antibody (orb215993)

| | |
|----------------------------|--|
| Description | Rabbit polyclonal antibody to SGK223 (Phospho-Y413) |
| Species/Host | Rabbit |
| Reactivity | Human |
| Conjugation | Unconjugated |
| Tested Applications | IH, WB |
| Immunogen | KLH-conjugated synthetic phosphopeptide corresponding to residues surrounding Y413 of human SGK223 protein. The exact sequence is proprietary. |
| Target | SGK223 |
| Preservatives | Liquid in 0.42% Potassium phosphate, 0.87% Sodium chloride, pH 7.3, 30% glycerol, and 0.01% sodium azide. |
| Form/Appearance | Liquid in 0.42% Potassium phosphate, 0.87% Sodium chloride, pH 7.3, 30% glycerol, and 0.01% sodium azide. |
| Storage | Maintain refrigerated at 2-8°C for up to 2 weeks. For long term storage store at -20°C in small aliquots to prevent freeze-thaw cycles. |
| Note | For research use only |
| Clonality | Polyclonal |
| Source | Rabbit |
| Uniprot ID | Q86YV5 |
| Entrez | 157285 |
| Dilution Range | WB: 1:500-1:1000, IHC-P: 1:100-1-200 |
| Expiration Date | 12 months from date of receipt. |



Western blot analysis of SGK223 (Phospho...)



Immunohistochemical analysis of SGK223 (...)