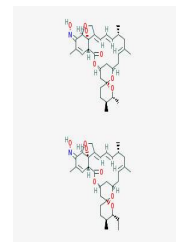


Product Datasheet

Milbemycin oxime (orb215992)

Description	Milbemycin oxime is a semi-synthetic macrocyclic lactone prepared by the oxidation and oximation of ...
Note	For research use only
Formula	C ₆₃ H ₈₈ N ₂ O ₁₄
MW	1097.3778
CAS Number	[129496-10-2]
SMILES	<chem>O=C1[C@@]([C@@]2(O)[C@@](OC/C2=CC=C[C@H](C)C/C(C)=C/C[C@@]3([H])O[C@]4(O[C@H](CC)[C@@H](C)CC4)[C@@](C3)([H])O1)([H])/C5=N/O)(C=C5C)[H].O=C6[C@@]([C@@]7(O)[C@@](/C8=NO)(OC/C7=CC=C[C@H](C)C/C(C)=C/C[C@@]9([H])O[C@@](O[C@@H]10CC)(CC[C@@H]10C)C[C@@](C9)([H</chem>
Expiration Date	12 months from date of receipt.



Chemical structure of Milbemycin oxime