
Product Datasheet

Caveolin-1/CAV1 Antibody (orb215919)

Description

Caveolin-1/CAV1 Antibody

Species/Host

Rabbit

Reactivity

Human, Mouse, Rat

Conjugation

Unconjugated

Tested

FC, IF, IHC, IHC-Fr, WB

Applications
Immunogen

E.coli-derived human Caveolin-1 recombinant protein (Position: G4-I178). Human Caveolin-1 shares 95% and 94% amino acid (aa) sequences identity with mouse and rat Caveolin-1, respectively.

Form/Appearance

Lyophilized

Concentration

Adding 0.2 ml of distilled water will yield a concentration of 500 µg/ml.

Storage

Store at -20°C for one year from date of receipt. After reconstitution, at 4°C for one month. It can also be aliquotted and stored frozen at -20°C for six months. Avoid repeated freeze-thaw cycles.

Note

For research use only

Application notes

WB: The detection limit for Caveolin-1 is approximately 0.25ng/lane under reducing conditions. Tested Species: In-house tested species with positive results. By Heat: Boiling the paraffin sections in 10mM citrate buffer, pH6.0, for 20mins is required for the staining of formalin/paraffin sections. Other applications have not been tested. Optimal dilutions should be determined by end users. . Add 0.2ml of distilled water will yield a concentration of 500ug/ml.

Isotype

Rabbit IgG

Clonality

Polyclonal

MW

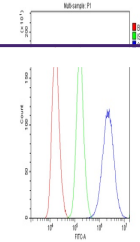
20472 MW

Uniprot ID
[Q03135](#)
Dilution Range

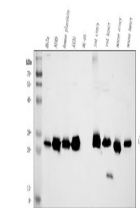
Western blot, 0.1-0.5µg/ml, Human, Mouse, Rat
 Immunohistochemistry (Paraffin-embedded Section), 0.5-1µg/ml, Human, By Heat Immunohistochemistry (Frozen Section), 0.5-1µg/ml, Human, Mouse, -
 Immunocytochemistry , 0.5-1µg/ml, Human, -
 Immunofluorescence, 2µg/ml, Human Flow Cytometry, 1-3µg/1x10⁶ cells, Human

Expiration Date

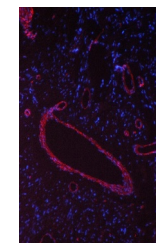
12 months from date of receipt.



Flow Cytometry analysis of U87 cells using...



WB analysis using anti-Caveolin-1/CAV1 a...



IF analysis of Caveolin-1/CAV1 using ant...