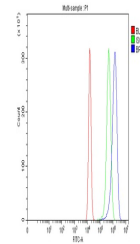


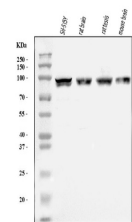
Product Datasheet

B Raf/BRAF Antibody (orb215918)

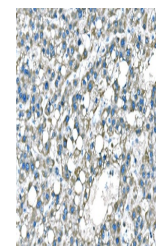
Description	B Raf/BRAF Antibody
Species/Host	Rabbit
Reactivity	Human, Mouse, Rat
Conjugation	Unconjugated
Tested Applications	FC, IHC, WB
Immunogen	E.coli-derived human B Raf recombinant protein (Position: A38-V230). Human B Raf shares 81% amino acid (aa) sequence identity with mouse B Raf.
Form/Appearance	Lyophilized
Concentration	Adding 0.2 ml of distilled water will yield a concentration of 500 µg/ml.
Storage	Store at -20°C for one year from date of receipt. After reconstitution, at 4°C for one month. It can also be aliquotted and stored frozen at -20°C for six months. Avoid repeated freeze-thaw cycles.
Note	For research use only
Application notes	WB: The detection limit for B Raf is approximately 0.25ng/lane under reducing conditions. Tested Species: In-house tested species with positive results. Other applications have not been tested. Optimal dilutions should be determined by end users. . Add 0.2ml of distilled water will yield a concentration of 500ug/ml.
Isotype	Rabbit IgG
Clonality	Polyclonal
MW	84437 MW
Uniprot ID	P15056
Expiration Date	12 months from date of receipt.



Flow Cytometry analysis of U20S cells using anti-B Raf antibody.



WB analysis of B Raf/BRAF using anti-B Raf antibody.



IHC analysis of B Raf/BRAF using anti-B Raf antibody.