
Product Datasheet

PROM1 Antibody (orb215910)

Description

PROM1 Antibody

Species/Host

Rabbit

Reactivity

Human

Conjugation

Unconjugated

Tested Applications

FC, IHC, WB

Immunogen

E.coli-derived human PROM1 recombinant protein (Position: P531-H865). Human PROM1 shares 61% amino acid (aa) sequence identity with mouse PROM1.

Form/Appearance

Lyophilized

Concentration

Adding 0.2 ml of distilled water will yield a concentration of 500 µg/ml.

Storage

Store at -20°C for one year from date of receipt. After reconstitution, at 4°C for one month. It can also be aliquotted and stored frozen at -20°C for six months. Avoid repeated freeze-thaw cycles.

Note

For research use only

Application notes

WB: The detection limit for PROM1 is approximately 0.25ng/lane under reducing conditions. Tested Species: In-house tested species with positive results. By Heat: Boiling the paraffin sections in 10mM citrate buffer, pH6.0, for 20mins is required for the staining of formalin/paraffin sections. Other applications have not been tested. Optimal dilutions should be determined by end users. . Add 0.2ml of distilled water will yield a concentration of 500ug/ml.

Isotype

Rabbit IgG

Clonality

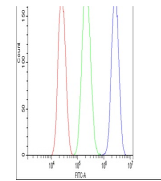
Polyclonal

MW

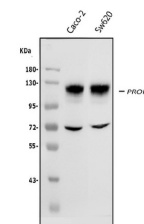
97202 MW

Uniprot ID
[O43490](#)
Expiration Date

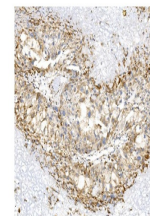
12 months from date of receipt.



Flow Cytometry analysis of CACO-2 cells ...



WB analysis of PROM1 using anti-PROM1 an...



IHC analysis of PROM1 using anti-PROM1 a...