
Product Datasheet

Sodium/Hydrogen Exchanger 1/SLC9A1 Antibody (orb215905)

Description

Sodium/Hydrogen Exchanger 1/SLC9A1 Antibody


 97KD -

Species/Host

Rabbit

40KD -

Reactivity

Human, Mouse, Rat

29KD -

Conjugation

Unconjugated

20KD -

Tested

IHC, WB

14KD -

Applications

 WB
analysis of
SLC9A1
using anti-
SLC9A1 ...

Immunogen

E.coli-derived human SLC9A1 recombinant protein (Position: H543-Q815). Human SLC9A1 shares 92% and 93% amino acid (aa) sequences identity with mouse and rat SLC9A1, respectively.

Form/Appearance

Lyophilized


 130KD -
100KD -
70KD -
55KD -
35KD -
25KD -

Concentration

Adding 0.2 ml of distilled water will yield a concentration of 500 µg/ml.

Storage

Store at -20°C for one year from date of receipt. After reconstitution, at 4°C for one month. It can also be aliquotted and stored frozen at -20°C for six months. Avoid repeated freeze-thaw cycles.

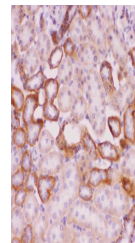
 WB
analysis of
SLC9A1
using anti-
SLC9A1 ...

Note

For research use only

Application notes

WB: The detection limit for SLC9A1 is approximately 0.25ng/lane under reducing conditions. Tested Species: In-house tested species with positive results. By Heat: Boiling the paraffin sections in 10mM citrate buffer, pH6.0, for 20mins is required for the staining of formalin/paraffin sections. Other applications have not been tested. Optimal dilutions should be determined by end users. . Add 0.2ml of distilled water will yield a concentration of 500ug/ml.


Isotype

Rabbit IgG

 IHC
analysis of
SLC9A1
using anti-
SLC9A1...

Clonality

Polyclonal

MW

90763 MW

Uniprot ID
[P19634](https://www.uniprot.org/protein/P19634)
Expiration Date

12 months from date of receipt.