

Product Datasheet

ATF2 Antibody (orb215886)

Description

ATF2 Antibody

Species/Host

Rabbit

Reactivity

Human, Mouse, Rat

Conjugation

Unconjugated

Tested

FC, IHC, IHC-Fr, WB

Applications
Immunogen

E.coli-derived human ATF2 recombinant protein (Position: E93-E450). Human ATF2 shares 99% amino acid (aa) sequence identity with both mouse and rat ATF2.

Form/Appearance

Lyophilized

Concentration

Adding 0.2 ml of distilled water will yield a concentration of 500 µg/ml.

Storage

Store at -20°C for one year from date of receipt. After reconstitution, at 4°C for one month. It can also be aliquotted and stored frozen at -20°C for six months. Avoid repeated freeze-thaw cycles.

Note

For research use only

Application notes

WB: The detection limit for ATF2 is approximately 0.25ng/lane under reducing conditions. Tested Species: In-house tested species with positive results. By Heat: Boiling the paraffin sections in 10mM citrate buffer, pH6.0, for 20mins is required for the staining of formalin/paraffin sections. Other applications have not been tested. Optimal dilutions should be determined by end users. . Add 0.2ml of distilled water will yield a concentration of 500ug/ml.

Isotype

Rabbit IgG

Clonality

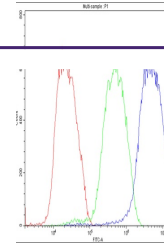
Polyclonal

MW

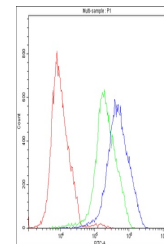
54537 MW

Uniprot ID
P15336
Expiration Date

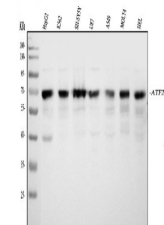
12 months from date of receipt.



Flow Cytometry analysis of K562 cells us...



Flow Cytometry analysis of HepG2 cells u...



WB analysis of ATF2 using anti-ATF2 anti...