
Product Datasheet

Angiotensin Converting Enzyme 1/ACE Antibody (orb215879)

Description

Angiotensin Converting Enzyme 1/ACE Antibody

Species/Host

Rabbit

Reactivity

Human, Mouse, Rat

Conjugation

Unconjugated

Tested Applications

ICC, IF, IHC, IHC-Fr, WB

Immunogen

E.coli-derived human ACE recombinant protein (Position: K651-Y864). Human ACE shares 73% and 76% amino acid (aa) sequences identity with mouse and rat ACE, respectively.

Form/Appearance

Lyophilized

Concentration

Adding 0.2 ml of distilled water will yield a concentration of 500 µg/ml.

Storage

Store at -20°C for one year from date of receipt. After reconstitution, at 4°C for one month. It can also be aliquotted and stored frozen at -20°C for six months. Avoid repeated freeze-thaw cycles.

Note

For research use only

Application notes

WB: The detection limit for ACE is approximately 0.25ng/lane under reducing conditions. Tested Species: In-house tested species with positive results. By Heat: Boiling the paraffin sections in 10mM citrate buffer, pH6.0, for 20mins is required for the staining of formalin/paraffin sections. Other applications have not been tested. Optimal dilutions should be determined by end users. . Add 0.2ml of distilled water will yield a concentration of 500ug/ml.

Isotype

Rabbit IgG

Clonality

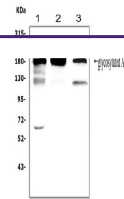
Polyclonal

MW

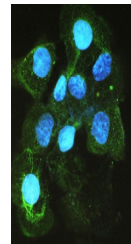
149715 MW

Uniprot ID
[P12821](https://www.uniprot.org/protein/P12821)
Expiration Date

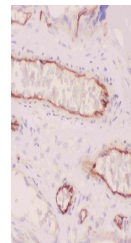
12 months from date of receipt.



WB analysis of ACE using anti-ACE antibody...



IF analysis of ACE using anti-ACE antibody...



IHC analysis of ACE using anti-ACE antibody...