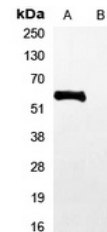


Product Datasheet

His-tag antibody (orb215848)

Description	Rabbit polyclonal antibody to His-tag
Species/Host	Rabbit
Conjugation	Unconjugated
Tested Applications	IP, WB
Immunogen	KLH-conjugated synthetic peptide HHHHHH.
Preservatives	Liquid in 0.42% Potassium phosphate, 0.87% Sodium chloride, pH 7.3, 30% glycerol, and 0.01% sodium azide.
Form/Appearance	Liquid in 0.42% Potassium phosphate, 0.87% Sodium chloride, pH 7.3, 30% glycerol, and 0.01% sodium azide.
Storage	Maintain refrigerated at 2-8°C for up to 2 weeks. For long term storage store at -20°C in small aliquots to prevent freeze-thaw cycles.
Note	For research use only
Clonality	Polyclonal
Source	Rabbit
Dilution Range	WB: 1-1000-1-2000, IP: 1-10-1-100
Expiration Date	12 months from date of receipt.



Western blot analysis of Anti-His-tag An...