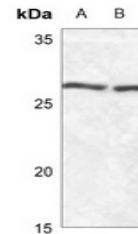


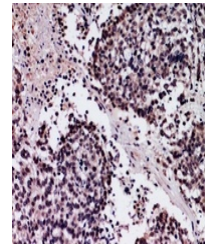
Product Datasheet

SFTPA1 antibody (orb215430)

Description	Rabbit polyclonal antibody to SFTPA1
Species/Host	Rabbit
Reactivity	Human, Mouse, Rat
Conjugation	Unconjugated
Tested Applications	IH, WB
Immunogen	KLH-conjugated synthetic peptide encompassing a sequence within the center region of human SFTPA1/2. The exact sequence is proprietary.
Target	SFTPA1; SFTPA2
Preservatives	Liquid in 0.42% Potassium phosphate, 0.87% Sodium chloride, pH 7.3, 30% glycerol, and 0.01% sodium azide.
Form/Appearance	Liquid in 0.42% Potassium phosphate, 0.87% Sodium chloride, pH 7.3, 30% glycerol, and 0.01% sodium azide.
Storage	Shipped at 4°C. Upon delivery aliquot and store at -20°C for one year. Avoid freeze/thaw cycles.
Note	For research use only
Clonality	Polyclonal
Source	Rabbit
Uniprot ID	Q8IWL2 , P08427 , Q8IWL1 , P35242
Entrez	729238 , 653509 , 24773
Dilution Range	WB: 1-500-1-1000
Expiration Date	12 months from date of receipt.



Western blot analysis of SFTPA1/2 expres...



Immunohistochemical analysis of SFTPA1/2...