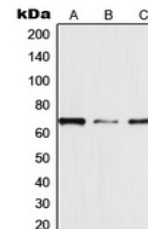


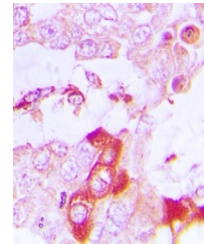
Product Datasheet

TRAF3IP3 antibody (orb215301)

Description	Rabbit polyclonal antibody to TRAF3IP3
Species/Host	Rabbit
Reactivity	Human
Conjugation	Unconjugated
Tested Applications	IF, IH, IP, WB
Immunogen	KLH-conjugated synthetic peptide encompassing a sequence within the center region of human TRAF3IP3. The exact sequence is proprietary.
Target	TRAF3IP3
Preservatives	Liquid in 0.42% Potassium phosphate, 0.87% Sodium chloride, pH 7.3, 30% glycerol, and 0.01% sodium azide.
Form/Appearance	Liquid in 0.42% Potassium phosphate, 0.87% Sodium chloride, pH 7.3, 30% glycerol, and 0.01% sodium azide.
Storage	Shipped at 4°C. Upon delivery aliquot and store at -20°C for one year. Avoid freeze/thaw cycles.
Note	For research use only
Clonality	Polyclonal
Source	Rabbit
Uniprot ID	Q9Y228
Entrez	80342
Dilution Range	WB: 1-500-1-1000, IHC-P: 1-100-1-200, IP: 1-10-1-100
Expiration Date	12 months from date of receipt.



Western blot analysis of TRAF3IP3 expres...



Immunohistochemical analysis of TRAF3IP3...



Immunofluorescent analysis of TRAF3IP3 S...