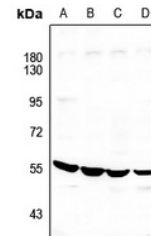


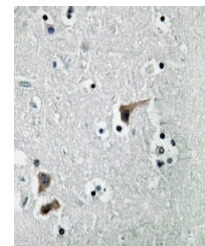
Product Datasheet

ATP6V1H antibody (orb215183)

Description	Rabbit polyclonal antibody to ATP6V1H
Species/Host	Rabbit
Reactivity	Human, Mouse, Porcine, Primate, Rat, Zebrafish
Conjugation	Unconjugated
Tested Applications	IH, WB
Immunogen	KLH-conjugated synthetic peptide encompassing a sequence within the center region of human ATP6V1H. The exact sequence is proprietary.
Target	ATP6V1H
Preservatives	Liquid in 0.42% Potassium phosphate, 0.87% Sodium chloride, pH 7.3, 30% glycerol, and 0.01% sodium azide.
Form/Appearance	Liquid in 0.42% Potassium phosphate, 0.87% Sodium chloride, pH 7.3, 30% glycerol, and 0.01% sodium azide.
Storage	Maintain refrigerated at 2-8°C for up to 2 weeks. For long term storage store at -20°C in small aliquots to prevent freeze-thaw cycles.
Note	For research use only
Clonality	Polyclonal
Source	Rabbit
Uniprot ID	Q9UI12 , Q8BVE3
Entrez	51606 , 108664
Dilution Range	WB: 1-500-1-1000, IP: 1-10-1-100
Expiration Date	12 months from date of receipt.



Western blot analysis of ATP6V1H express...



Immunohistochemical analysis of ATP6V1H

...