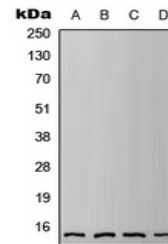


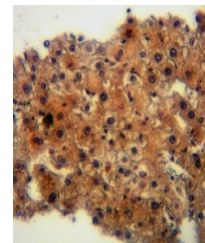
Product Datasheet

IFITM3 antibody (orb214984)

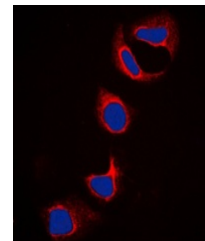
Description	Rabbit polyclonal antibody to IFITM3
Species/Host	Rabbit
Reactivity	Human, Mouse, Porcine, Rat
Conjugation	Unconjugated
Tested Applications	IF, IH, WB
Immunogen	KLH-conjugated synthetic peptide encompassing a sequence within the N-term region of human IFITM3. The exact sequence is proprietary.
Target	IFITM3
Preservatives	Liquid in 0.42% Potassium phosphate, 0.87% Sodium chloride, pH 7.3, 30% glycerol, and 0.01% sodium azide.
Form/Appearance	Liquid in 0.42% Potassium phosphate, 0.87% Sodium chloride, pH 7.3, 30% glycerol, and 0.01% sodium azide.
Storage	Maintain refrigerated at 2-8°C for up to 2 weeks. For long term storage store at -20°C in small aliquots to prevent freeze-thaw cycles.
Note	For research use only
Clonality	Polyclonal
Source	Rabbit
Uniprot ID	Q9CQW9 , Q01628 , P26376
Entrez	10410 , 66141 , 361673
Dilution Range	WB: 1-500-1-1000, IF/ICC: 1-100-1-500
Expiration Date	12 months from date of receipt.



Western blot analysis of IFITM3 expressi...



Immunohistochemical analysis of IFITM3 s...



Immunofluorescent analysis of IFITM3 sta...