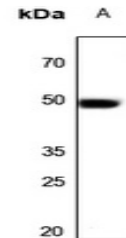


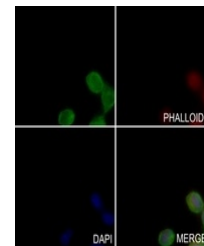
Product Datasheet

ACTR3 antibody (orb214960)

Description	Rabbit polyclonal antibody to ACTR3
Species/Host	Rabbit
Reactivity	Human, Mouse, Porcine, Rabbit, Rat, Zebrafish
Conjugation	Unconjugated
Tested Applications	IF, WB
Immunogen	KLH-conjugated synthetic peptide encompassing a sequence within the C-term region of human ARP3. The exact sequence is proprietary.
Target	ACTR3
Preservatives	Liquid in 0.42% Potassium phosphate, 0.87% Sodium chloride, pH 7.3, 30% glycerol, and 0.01% sodium azide.
Form/Appearance	Liquid in 0.42% Potassium phosphate, 0.87% Sodium chloride, pH 7.3, 30% glycerol, and 0.01% sodium azide.
Storage	Maintain refrigerated at 2-8°C for up to 2 weeks. For long term storage store at -20°C in small aliquots to prevent freeze-thaw cycles.
Note	For research use only
Clonality	Polyclonal
Source	Rabbit
Uniprot ID	Q4V7C7 , Q99JY9 , P61158
Entrez	10096 , 81732 , 74117
Dilution Range	WB: 1-500-1-1000
Expiration Date	12 months from date of receipt.



Western blot analysis of ARP3 expression...



Immunofluorescent analysis of ARP3 stain...