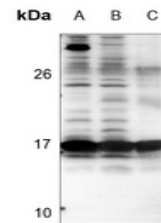


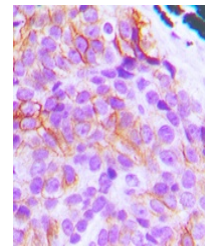
Product Datasheet

BCL2L11 antibody (orb214954)

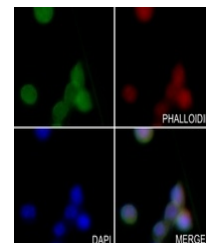
Description	Rabbit polyclonal antibody to BCL2L11
Species/Host	Rabbit
Reactivity	Human, Mouse, Porcine, Rabbit, Rat
Conjugation	Unconjugated
Tested Applications	IF, IH, WB
Immunogen	KLH-conjugated synthetic peptide encompassing a sequence within the N-term region of human BIM. The exact sequence is proprietary.
Target	BCL2L11
Preservatives	Liquid in 0.42% Potassium phosphate, 0.87% Sodium chloride, pH 7.3, 30% glycerol, and 0.01% sodium azide.
Form/Appearance	Liquid in 0.42% Potassium phosphate, 0.87% Sodium chloride, pH 7.3, 30% glycerol, and 0.01% sodium azide.
Storage	Maintain refrigerated at 2-8°C for up to 2 weeks. For long term storage store at -20°C in small aliquots to prevent freeze-thaw cycles.
Note	For research use only
Clonality	Polyclonal
Source	Rabbit
Uniprot ID	O54918 , O88498 , O43521
Entrez	64547 , 10018 , 12125
Dilution Range	WB: 1-500-1-1000, IHC-P: 1-100-1-200
Expiration Date	12 months from date of receipt.



Western blot analysis of BIM expression ...



Immunohistochemical analysis of BIM stai...



Immunofluorescent analysis of BIM staini...