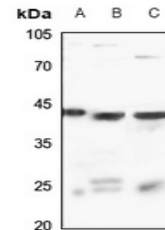


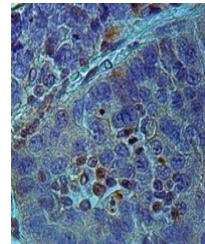
Product Datasheet

RASSF2 antibody (orb214928)

| | |
|----------------------------|---|
| Description | Rabbit polyclonal antibody to RASSF2 |
| Species/Host | Rabbit |
| Reactivity | Human, Mouse, Primate, Rat |
| Conjugation | Unconjugated |
| Tested Applications | IH, WB |
| Immunogen | KLH-conjugated synthetic peptide encompassing a sequence within the center region of human RASSF2. The exact sequence is proprietary. |
| Target | RASSF2 |
| Preservatives | Liquid in 0.42% Potassium phosphate, 0.87% Sodium chloride, pH 7.3, 30% glycerol, and 0.01% sodium azide. |
| Form/Appearance | Liquid in 0.42% Potassium phosphate, 0.87% Sodium chloride, pH 7.3, 30% glycerol, and 0.01% sodium azide. |
| Storage | Maintain refrigerated at 2-8°C for up to 2 weeks. For long term storage store at -20°C in small aliquots to prevent freeze-thaw cycles. |
| Note | For research use only |
| Clonality | Polyclonal |
| Source | Rabbit |
| Uniprot ID | Q3B7D5 , P50749 , Q8BMS9 |
| Entrez | 9770 , 215653 , 311437 |
| Dilution Range | WB: 1-500-1-1000 |
| Expiration Date | 12 months from date of receipt. |



Western blot analysis of RASSF2 expressi...



Immunohistochemical analysis of RASSF2 S...