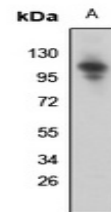


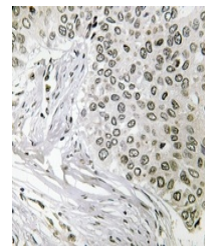
Product Datasheet

EFTUD2 antibody (orb214890)

Description	Rabbit polyclonal antibody to EFTUD2
Species/Host	Rabbit
Reactivity	Human, Mouse, Rat, Zebrafish
Conjugation	Unconjugated
Tested Applications	IH, WB
Immunogen	KLH-conjugated synthetic peptide encompassing a sequence within the center region of human SNRP116. The exact sequence is proprietary.
Target	EFTUD2
Preservatives	Liquid in 0.42% Potassium phosphate, 0.87% Sodium chloride, pH 7.3, 30% glycerol, and 0.01% sodium azide.
Form/Appearance	Liquid in 0.42% Potassium phosphate, 0.87% Sodium chloride, pH 7.3, 30% glycerol, and 0.01% sodium azide.
Storage	Maintain refrigerated at 2-8°C for up to 2 weeks. For long term storage store at -20°C in small aliquots to prevent freeze-thaw cycles.
Note	For research use only
Clonality	Polyclonal
Source	Rabbit
Uniprot ID	O08810 , Q15029
Entrez	9343 , 20624
Dilution Range	WB: 1-500-1-1000, IF/ICC: 1-100-1-500
Expiration Date	12 months from date of receipt.



Western blot analysis of SNRP116 express...



Immunohistochemical analysis of SNRP116

...