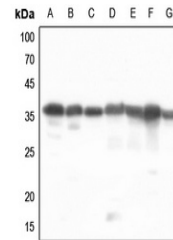


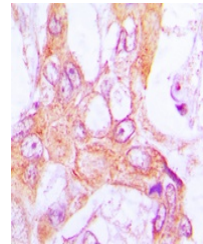
## Product Datasheet

### PDLIM1 antibody (orb214862)

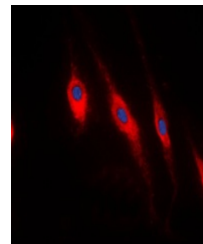
<b>Description</b>	Rabbit polyclonal antibody to PDLIM1
<b>Species/Host</b>	Rabbit
<b>Reactivity</b>	Human, Mouse, Porcine, Rat
<b>Conjugation</b>	Unconjugated
<b>Tested Applications</b>	IF, IH, IP, WB
<b>Immunogen</b>	KLH-conjugated synthetic peptide encompassing a sequence within the center region of human PDLIM1. The exact sequence is proprietary.
<b>Target</b>	PDLIM1
<b>Preservatives</b>	Liquid in 0.42% Potassium phosphate, 0.87% Sodium chloride, pH 7.3, 30% glycerol, and 0.01% sodium azide.
<b>Form/Appearance</b>	Liquid in 0.42% Potassium phosphate, 0.87% Sodium chloride, pH 7.3, 30% glycerol, and 0.01% sodium azide.
<b>Storage</b>	Shipped at 4°C. Upon delivery aliquot and store at -20°C for one year. Avoid freeze/thaw cycles.
<b>Note</b>	For research use only
<b>Clonality</b>	Polyclonal
<b>Source</b>	Rabbit
<b>Uniprot ID</b>	<a href="#">O70400</a> , <a href="#">O00151</a> , <a href="#">P52944</a>
<b>Entrez</b>	<a href="#">54132</a> , <a href="#">9124</a> , <a href="#">54133</a>
<b>Dilution Range</b>	WB: 1-500-1-1000, IHC-P: 1-100-1-200, IF/ICC: 1-100-1-500, IP: 1-10-1-100
<b>Expiration Date</b>	12 months from date of receipt.



Western blot analysis of PDLIM1 expressi...



Immunohistochemical analysis of PDLIM1 S...



Immunofluorescent analysis of PDLIM1 sta...