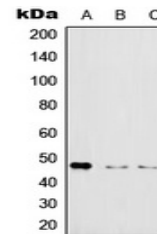


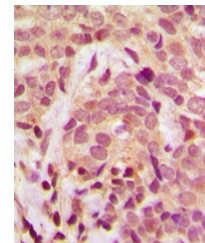
Product Datasheet

IKBKG (phospho-S31) antibody (orb214796)

| | |
|----------------------------|--|
| Description | Rabbit polyclonal antibody to IKBKG |
| Species/Host | Rabbit |
| Reactivity | Human, Mouse, Rat |
| Conjugation | Unconjugated |
| Tested Applications | IH, WB |
| Immunogen | KLH-conjugated synthetic phosphopeptide corresponding to residues surrounding S31 of human IKK gamma protein. The exact sequence is proprietary. |
| Target | IKBKG |
| Preservatives | Liquid in 0.42% Potassium phosphate, 0.87% Sodium chloride, pH 7.3, 30% glycerol, and 0.01% sodium azide. |
| Form/Appearance | Liquid in 0.42% Potassium phosphate, 0.87% Sodium chloride, pH 7.3, 30% glycerol, and 0.01% sodium azide. |
| Storage | Maintain refrigerated at 2-8°C for up to 2 weeks. For long term storage store at -20°C in small aliquots to prevent freeze-thaw cycles. |
| Note | For research use only |
| Clonality | Polyclonal |
| Source | Rabbit |
| Uniprot ID | Q9Y6K9 , Q6TMG5 , O88522 |
| Entrez | 309295 , 8517 , 16151 |
| Dilution Range | WB: 1-500-1-1000, IHC-P: 1-100-1-200 |
| Expiration Date | 12 months from date of receipt. |



Western blot analysis of IKK gamma (Phos...)



Immunohistochemical analysis of IKK gamma