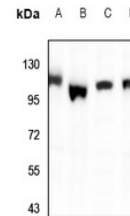


## Product Datasheet

### PPFIBP1 antibody (orb214791)

|                            |  |
|----------------------------|--|
| <b>Description</b>         | Rabbit polyclonal antibody to PPFIBP1  |
| <b>Species/Host</b>        | Rabbit   |
| <b>Reactivity</b>          | Human, Mouse, Rat  |
| <b>Conjugation</b>         | Unconjugated   |
| <b>Tested Applications</b> | WB   |
| <b>Immunogen</b>           | KLH-conjugated synthetic peptide encompassing a sequence within the center region of human PPFIBP1. The exact sequence is proprietary. |
| <b>Target</b>              | PPFIBP1  |
| <b>Preservatives</b>       | Liquid in 0.42% Potassium phosphate, 0.87% Sodium chloride, pH 7.3, 30% glycerol, and 0.01% sodium azide.                              |
| <b>Form/Appearance</b>     | Liquid in 0.42% Potassium phosphate, 0.87% Sodium chloride, pH 7.3, 30% glycerol, and 0.01% sodium azide.                              |
| <b>Storage</b>             | Shipped at 4°C. Upon delivery aliquot and store at -20°C for one year. Avoid freeze/thaw cycles.                                       |
| <b>Note</b>                | For research use only  |
| <b>Clonality</b>           | Polyclonal   |
| <b>Source</b>              | Rabbit   |
| <b>Uniprot ID</b>          | <a href="#">Q86W92</a>   |
| <b>Entrez</b>              | <a href="#">8496</a>   |
| <b>Dilution Range</b>      | WB: 1-500-1-1000, IP: 1-10-1-100   |
| <b>Expiration Date</b>     | 12 months from date of receipt.  |



Western blot analysis of PPFIBP1 express...