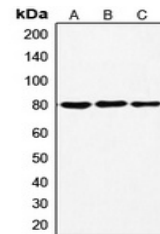


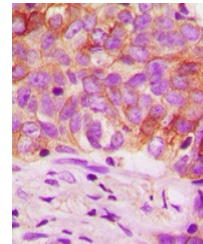
Product Datasheet

Ezrin (phospho-T567) antibody (orb214730)

Description	Rabbit polyclonal antibody to EZR
Species/Host	Rabbit
Reactivity	Human, Mouse, Porcine, Rat, Zebrafish
Conjugation	Unconjugated
Tested Applications	IH, IP, WB
Immunogen	KLH-conjugated synthetic phosphopeptide corresponding to residues surrounding T567 of human Ezrin protein. The exact sequence is proprietary.
Target	EZR
Preservatives	Liquid in 0.42% Potassium phosphate, 0.87% Sodium chloride, pH 7.3, 30% glycerol, and 0.01% sodium azide.
Form/Appearance	Liquid in 0.42% Potassium phosphate, 0.87% Sodium chloride, pH 7.3, 30% glycerol, and 0.01% sodium azide.
Storage	Maintain refrigerated at 2-8°C for up to 2 weeks. For long term storage store at -20°C in small aliquots to prevent freeze-thaw cycles.
Note	For research use only
Clonality	Polyclonal
Source	Rabbit
Uniprot ID	P31977, P15311, P26040
Entrez	7430, 54319, 22350
Dilution Range	WB: 1-500-1-1000, IHC-P: 1-100-1-200, IP: 1-10-1-100
Expiration Date	12 months from date of receipt.



Western blot analysis of Ezrin (Phospho-...)



Immunohistochemical analysis of Ezrin (P...)