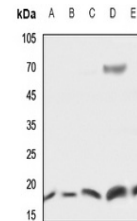


Product Datasheet

UBE2D2 antibody (orb214711)

Description	Rabbit polyclonal antibody to UBE2D2
Species/Host	Rabbit
Reactivity	Human, Mouse, Porcine, Rat
Conjugation	Unconjugated
Tested Applications	WB
Immunogen	KLH-conjugated synthetic peptide encompassing a sequence within the C-term region of human UBE2D2. The exact sequence is proprietary.
Target	UBE2D2
Preservatives	Liquid in 0.42% Potassium phosphate, 0.87% Sodium chloride, pH 7.3, 30% glycerol, and 0.01% sodium azide.
Form/Appearance	Liquid in 0.42% Potassium phosphate, 0.87% Sodium chloride, pH 7.3, 30% glycerol, and 0.01% sodium azide.
Storage	Maintain refrigerated at 2-8°C for up to 2 weeks. For long term storage store at -20°C in small aliquots to prevent freeze-thaw cycles.
Note	For research use only
Clonality	Polyclonal
Source	Rabbit
Uniprot ID	P62838 , P62839 , P62837
Entrez	641452 , 7322 , 56550
Dilution Range	WB: 1-500-1-1000, IP: 1-10-1-100
Expiration Date	12 months from date of receipt.



Western blot analysis of UBE2D2 expressi...