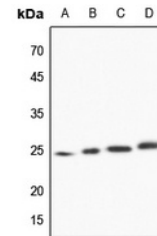


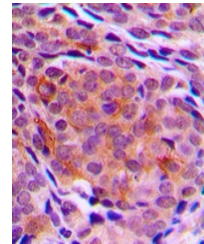
Product Datasheet

TPT1 antibody (orb214701)

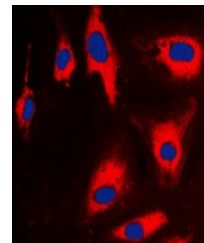
| | |
|----------------------------|---|
| Description | Rabbit polyclonal antibody to TPT1 |
| Species/Host | Rabbit |
| Reactivity | Human, Mouse, Porcine, Rat |
| Conjugation | Unconjugated |
| Tested Applications | IF, IH, WB |
| Immunogen | KLH-conjugated synthetic peptide encompassing a sequence within the center region of human TCTP. The exact sequence is proprietary. |
| Target | TPT1 |
| Preservatives | Liquid in 0.42% Potassium phosphate, 0.87% Sodium chloride, pH 7.3, 30% glycerol, and 0.01% sodium azide. |
| Form/Appearance | Liquid in 0.42% Potassium phosphate, 0.87% Sodium chloride, pH 7.3, 30% glycerol, and 0.01% sodium azide. |
| Storage | Shipped at 4°C. Upon delivery aliquot and store at -20°C for one year. Avoid freeze/thaw cycles. |
| Note | For research use only |
| Clonality | Polyclonal |
| Source | Rabbit |
| Uniprot ID | P13693 |
| Entrez | 7178 |
| Dilution Range | WB: 1-500-1-1000, IHC-P: 1-100-1-200, IF/ICC: 1-100-1-500, IP: 1-10-1-100 |
| Expiration Date | 12 months from date of receipt. |



Western blot analysis of TCTP expression...



Immunohistochemical analysis of TCTP sta...



Immunofluorescent analysis of TCTP stain...