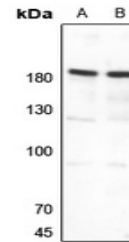


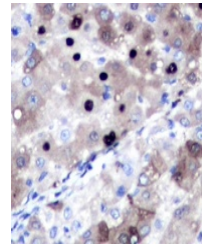
## Product Datasheet

### TOP2A antibody (orb214689)

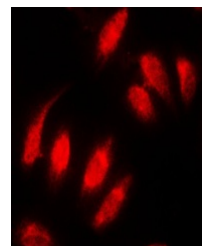
|                            |  |
|----------------------------|--|
| <b>Description</b>         | Rabbit polyclonal antibody to TOP2A  |
| <b>Species/Host</b>        | Rabbit   |
| <b>Reactivity</b>          | Human  |
| <b>Conjugation</b>         | Unconjugated   |
| <b>Tested Applications</b> | IF, IH, WB   |
| <b>Immunogen</b>           | KLH-conjugated synthetic peptide encompassing a sequence within the N-term region of human Topoisomerase 2 alpha. The exact sequence is proprietary. |
| <b>Target</b>              | TOP2A  |
| <b>Preservatives</b>       | Liquid in 0.42% Potassium phosphate, 0.87% Sodium chloride, pH 7.3, 30% glycerol, and 0.01% sodium azide.  |
| <b>Form/Appearance</b>     | Liquid in 0.42% Potassium phosphate, 0.87% Sodium chloride, pH 7.3, 30% glycerol, and 0.01% sodium azide.  |
| <b>Storage</b>             | Maintain refrigerated at 2-8°C for up to 2 weeks. For long term storage store at -20°C in small aliquots to prevent freeze-thaw cycles.              |
| <b>Note</b>                | For research use only  |
| <b>Clonality</b>           | Polyclonal   |
| <b>Source</b>              | Rabbit   |
| <b>Uniprot ID</b>          | <b>P11388</b>  |
| <b>Entrez</b>              | <b>7153</b>  |
| <b>Dilution Range</b>      | WB: 1-500-1-1000, IHC-P: 1-100-1-200, IF/ICC: 1-100-1-500, IP: 1-10-1-100  |
| <b>Expiration Date</b>     | 12 months from date of receipt.  |



Western blot analysis of Topoisomerase 2...



Immunohistochemical analysis of Topoisom...



Immunofluorescent analysis of Topoisomer...