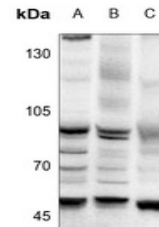


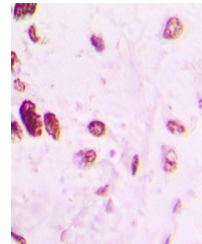
Product Datasheet

TFAP2A antibody (orb214653)

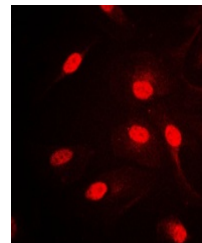
Description	Rabbit polyclonal antibody to TFAP2A
Species/Host	Rabbit
Reactivity	Human, Mouse, Porcine, Rat, Sheep
Conjugation	Unconjugated
Tested Applications	ChIP, EMSA, IF, IH, WB
Immunogen	KLH-conjugated synthetic peptide encompassing a sequence within the C-term region of human AP2 alpha/beta. The exact sequence is proprietary.
Target	TFAP2A; TFAP2B
Preservatives	Liquid in 0.42% Potassium phosphate, 0.87% Sodium chloride, pH 7.3, 30% glycerol, and 0.01% sodium azide.
Form/Appearance	Liquid in 0.42% Potassium phosphate, 0.87% Sodium chloride, pH 7.3, 30% glycerol, and 0.01% sodium azide.
Storage	Maintain refrigerated at 2-8°C for up to 2 weeks. For long term storage store at -20°C in small aliquots to prevent freeze-thaw cycles.
Note	For research use only
Clonality	Polyclonal
Source	Rabbit
Uniprot ID	Q92481 , Q61313 , P58197 , P05549 , P34056
Entrez	21419 , 7020 , 21418
Dilution Range	WB: 1-500-1-1000, IHC-P: 1-100-1-200, IF/ICC: 1-100-1-500, ChIP: 1-100-1-500
Expiration Date	12 months from date of receipt.



Western blot analysis of AP2 alpha/beta ...



Immunohistochemical analysis of AP2 alph...



Immunofluorescent analysis of AP2 alpha/...