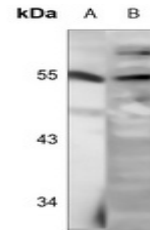


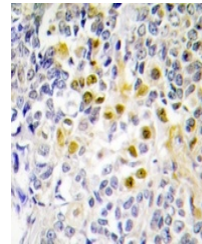
Product Datasheet

STK11 (phospho-S428) antibody (orb214629)

Description	Rabbit polyclonal antibody to STK11
Species/Host	Rabbit
Reactivity	Human, Mouse, Primate, Rat
Conjugation	Unconjugated
Tested Applications	IF, IH, WB
Immunogen	KLH-conjugated synthetic phosphopeptide corresponding to residues surrounding S428 of human LKB1 protein. The exact sequence is proprietary.
Target	STK11
Preservatives	Liquid in 0.42% Potassium phosphate, 0.87% Sodium chloride, pH 7.3, 30% glycerol, and 0.01% sodium azide.
Form/Appearance	Liquid in 0.42% Potassium phosphate, 0.87% Sodium chloride, pH 7.3, 30% glycerol, and 0.01% sodium azide.
Storage	Shipped at 4°C. Upon delivery aliquot and store at -20°C for one year. Avoid freeze/thaw cycles.
Note	For research use only
Clonality	Polyclonal
Source	Rabbit
Uniprot ID	Q15831 , Q9WTK7 , D4AE59
Entrez	6794 , 20869
Dilution Range	WB: 1-500-1-1000
Expiration Date	12 months from date of receipt.



Western blot analysis of LKB1 (Phospho-S...



Immunohistochemical analysis of LKB1 (Ph...



Immunofluorescent analysis of LKB1 (Phos...