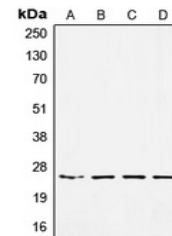


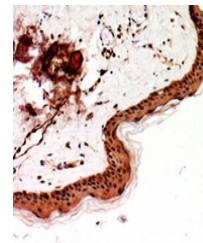
Product Datasheet

SSX1 antibody (orb214614)

Description	Rabbit polyclonal antibody to SSX1
Species/Host	Rabbit
Reactivity	Human
Conjugation	Unconjugated
Tested Applications	IH, WB
Immunogen	KLH-conjugated synthetic peptide encompassing a sequence within the C-term region of human SSX-pan. The exact sequence is proprietary.
Target	SSX1; SSX2; SSX3; SSX4; SSX5; SSX6; SSX7; SSX8; SSX9
Preservatives	Liquid in 0.42% Potassium phosphate, 0.87% Sodium chloride, pH 7.3, 30% glycerol, and 0.01% sodium azide.
Form/Appearance	Liquid in 0.42% Potassium phosphate, 0.87% Sodium chloride, pH 7.3, 30% glycerol, and 0.01% sodium azide.
Storage	Maintain refrigerated at 2-8°C for up to 2 weeks. For long term storage store at -20°C in small aliquots to prevent freeze-thaw cycles.
Note	For research use only
Clonality	Polyclonal
Source	Rabbit
Uniprot ID	O60225 , Q99909 , Q7RTT6 , Q16384 , Q7RTT5 , Q7RTT4 , O60224 , Q16385 , Q7RTT3
Entrez	6756 , 727837 , 548313 , 280658 , 6759 , 10214 , 6757 , 6758
Dilution Range	WB: 1-500-1-1000
Expiration Date	12 months from date of receipt.



Western blot analysis of SSX-pan express...



Immunohistochemical analysis of SSX-pan

...