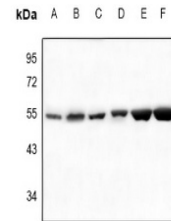


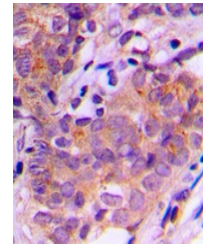
Product Datasheet

SGK1 antibody (orb214571)

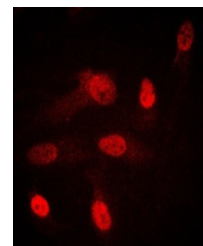
Description	Rabbit polyclonal antibody to SGK1
Species/Host	Rabbit
Reactivity	Human, Mouse, Rabbit, Rat, Zebrafish
Conjugation	Unconjugated
Tested Applications	IF, IH, WB
Immunogen	KLH-conjugated synthetic peptide encompassing a sequence within the center region of human SGK1/2. The exact sequence is proprietary.
Target	SGK1
Preservatives	Liquid in 0.42% Potassium phosphate, 0.87% Sodium chloride, pH 7.3, 30% glycerol, and 0.01% sodium azide.
Form/Appearance	Liquid in 0.42% Potassium phosphate, 0.87% Sodium chloride, pH 7.3, 30% glycerol, and 0.01% sodium azide.
Storage	Shipped at 4°C. Upon delivery aliquot and store at -20°C for one year. Avoid freeze/thaw cycles.
Note	For research use only
Clonality	Polyclonal
Source	Rabbit
Uniprot ID	Q06226 , Q9HBY8 , Q9WVC6 , Q9QZS5 , Q8R4U9 , O00141
Entrez	171497 , 27219 , 10110 , 6446 , 20393
Dilution Range	WB: 1-500-1-1000, IHC-P: 1-100-1-200, IF/ICC: 1-100-1-500
Expiration Date	12 months from date of receipt.



Western blot analysis of SGK1/2 expressi...



Immunohistochemical analysis of SGK1/2 S...



Immunofluorescent analysis of SGK1/2 sta...