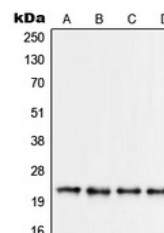


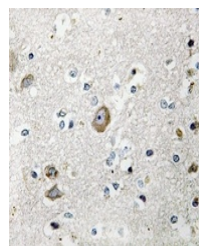
Product Datasheet

RPS9 antibody (orb214544)

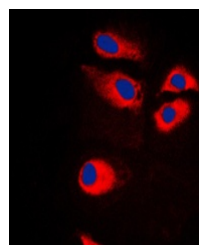
Description	Rabbit polyclonal antibody to RPS9
Species/Host	Rabbit
Reactivity	Human, Mouse, Porcine, Rat
Conjugation	Unconjugated
Tested Applications	FC, IF, IH, WB
Immunogen	KLH-conjugated synthetic peptide encompassing a sequence within the center region of human RPS9. The exact sequence is proprietary.
Target	RPS9
Preservatives	Liquid in 0.42% Potassium phosphate, 0.87% Sodium chloride, pH 7.3, 30% glycerol, and 0.01% sodium azide.
Form/Appearance	Liquid in 0.42% Potassium phosphate, 0.87% Sodium chloride, pH 7.3, 30% glycerol, and 0.01% sodium azide.
Storage	Maintain refrigerated at 2-8°C for up to 2 weeks. For long term storage store at -20°C in small aliquots to prevent freeze-thaw cycles.
Note	For research use only
Clonality	Polyclonal
Source	Rabbit
Uniprot ID	P29314 , P46781 , Q6ZWN5
Entrez	76846 , 81772 , 6203 , 100909466
Dilution Range	WB: 1-500-1-1000, IF/ICC: 1-100-1-500, IP: 1-10-1-100
Expiration Date	12 months from date of receipt.



Western blot analysis of RPS9 expression...



Immunohistochemical analysis of RPS9 sta...



Immunofluorescent analysis of RPS9 stain...