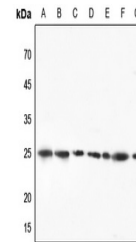


Product Datasheet

RPL10 antibody (orb214523)

Description	Rabbit polyclonal antibody to RPL10
Species/Host	Rabbit
Reactivity	Human, Mouse, Porcine, Primate, Rat, Sheep
Conjugation	Unconjugated
Tested Applications	WB
Immunogen	KLH-conjugated synthetic peptide encompassing a sequence within the N-term region of human RPL10. The exact sequence is proprietary.
Target	RPL10
Preservatives	Liquid in 0.42% Potassium phosphate, 0.87% Sodium chloride, pH 7.3, 30% glycerol, and 0.01% sodium azide.
Form/Appearance	Liquid in 0.42% Potassium phosphate, 0.87% Sodium chloride, pH 7.3, 30% glycerol, and 0.01% sodium azide.
Storage	Maintain refrigerated at 2-8°C for up to 2 weeks. For long term storage store at -20°C in small aliquots to prevent freeze-thaw cycles.
Note	For research use only
Clonality	Polyclonal
Source	Rabbit
Uniprot ID	P27635 , Q6PDV7 , Q6ZWV3
Entrez	110954 , 81764 , 6134
Dilution Range	WB: 1-500-1-1000
Expiration Date	12 months from date of receipt.



Western blot analysis of RPL10 expression...