
Product Datasheet

JNK1/2/3 (phospho-T183) antibody (orb214454)

Description

Rabbit polyclonal antibody to MAPK8

Species/Host

Rabbit

Reactivity

Human, Mouse, Porcine, Rat

Conjugation

Unconjugated

Tested Applications

IF, IH, WB

Immunogen

KLH-conjugated synthetic phosphopeptide corresponding to residues surrounding T183 of human JNK1/2/3 protein. The exact sequence is proprietary.

Target

MAPK8; MAPK9; MAPK10

Preservatives

Liquid in 0.42% Potassium phosphate, 0.87% Sodium chloride, pH 7.3, 30% glycerol, and 0.01% sodium azide.

Form/Appearance

Liquid in 0.42% Potassium phosphate, 0.87% Sodium chloride, pH 7.3, 30% glycerol, and 0.01% sodium azide.

Storage

Maintain refrigerated at 2-8°C for up to 2 weeks. For long term storage store at -20°C in small aliquots to prevent freeze-thaw cycles.

Note

For research use only

Clonality

Polyclonal

Source

Rabbit

Uniprot ID

[Q61831](#), [Q91Y86](#), [P49186](#), [P53779](#), [P49187](#), [P45983](#), [P45984](#), [Q9WTU6](#), [P49185](#)

Entrez

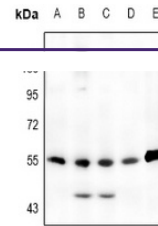
[50658](#), [5602](#), [26419](#), [26420](#), [5599](#), [5601](#), [25272](#), [116554](#)

Dilution Range

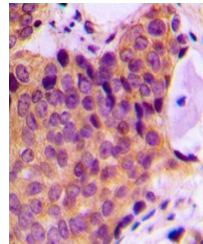
WB: 1-500-1-1000, IHC-P: 1-100-1-200, IF/ICC: 1-100-1-500

Expiration Date

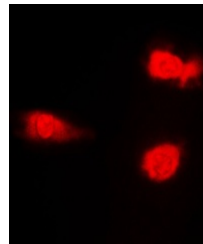
12 months from date of receipt.



Western blot analysis of JNK1/2/3 (Phosp...



Immunohistochemical analysis of JNK1/2/3...



Immunofluorescent analysis of JNK1/2/3 (...