

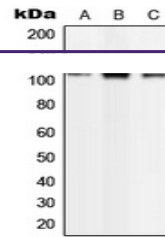
---

## Product Datasheet

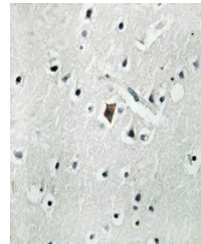
### Phospholipase D2 (phospho-Y169) antibody (orb214409)

**Description**

Rabbit polyclonal antibody to PLD2



Western blot analysis of Phospholipase D...



Immunohistochemical analysis of Phosphol...

**Species/Host**

Rabbit

**Reactivity**

Human, Mouse, Primate, Rat

**Conjugation**

Unconjugated

**Tested Applications**

IH, WB

**Immunogen**

KLH-conjugated synthetic phosphopeptide corresponding to residues surrounding Y169 of human Phospholipase D2 protein. The exact sequence is proprietary.

**Target**

PLD2

**Preservatives**

Liquid in 0.42% Potassium phosphate, 0.87% Sodium chloride, pH 7.3, 30% glycerol, and 0.01% sodium azide.

**Form/Appearance**

Liquid in 0.42% Potassium phosphate, 0.87% Sodium chloride, pH 7.3, 30% glycerol, and 0.01% sodium azide.

**Storage**

Maintain refrigerated at 2-8°C for up to 2 weeks. For long term storage store at -20°C in small aliquots to prevent freeze-thaw cycles.

**Note**

For research use only

**Clonality**

Polyclonal

**Source**

Rabbit

**Uniprot ID**
[P97813](#), [O14939](#), [P70498](#)
**Entrez**
[25097](#), [5338](#), [18806](#)
**Dilution Range**

WB: 1-500-1-1000

**Expiration Date**

12 months from date of receipt.