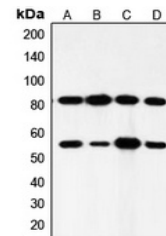


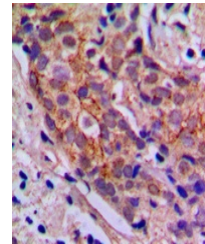
Product Datasheet

PIK3R1 antibody (orb214397)

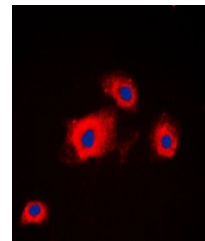
Description	Rabbit polyclonal antibody to PIK3R1
Species/Host	Rabbit
Reactivity	Human, Mouse, Rat
Conjugation	Unconjugated
Tested Applications	IF, IH, WB
Immunogen	KLH-conjugated synthetic peptide encompassing a sequence within the center region of human PI3K p85 alpha/p55 gamma. The exact sequence is proprietary.
Target	PIK3R1; PIK3R3
Preservatives	Liquid in 0.42% Potassium phosphate, 0.87% Sodium chloride, pH 7.3, 30% glycerol, and 0.01% sodium azide.
Form/Appearance	Liquid in 0.42% Potassium phosphate, 0.87% Sodium chloride, pH 7.3, 30% glycerol, and 0.01% sodium azide.
Storage	Maintain refrigerated at 2-8°C for up to 2 weeks. For long term storage store at -20°C in small aliquots to prevent freeze-thaw cycles.
Note	For research use only
Clonality	Polyclonal
Source	Rabbit
Uniprot ID	Q64143 , P26450 , P27986 , Q63789 , Q63787 , Q92569
Entrez	8503 , 5295 , 60664 , 18708 , 18710 , 25513
Dilution Range	WB: 1-500-1-1000, IHC-P: 1-100-1-200, IF/ICC: 1-100-1-500
Expiration Date	12 months from date of receipt.



Western blot analysis of PI3K p85 alpha/...



Immunohistochemical analysis of PI3K p85...



Immunofluorescent analysis of PI3K p85 a...