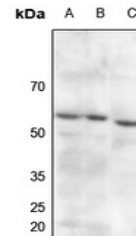


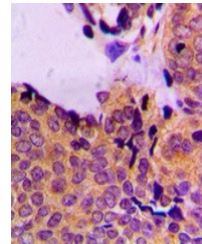
Product Datasheet

PDPK1 (phospho-S241) antibody (orb214377)

| | |
|----------------------------|---|
| Description | Rabbit polyclonal antibody to PDPK1 |
| Species/Host | Rabbit |
| Reactivity | Human, Mouse, Porcine, Rabbit, Rat, Sheep |
| Conjugation | Unconjugated |
| Tested Applications | IH, WB |
| Immunogen | KLH-conjugated synthetic phosphopeptide corresponding to residues surrounding S241 of human PDPK1 protein. The exact sequence is proprietary. |
| Target | PDPK1 |
| Preservatives | Liquid in 0.42% Potassium phosphate, 0.87% Sodium chloride, pH 7.3, 30% glycerol, and 0.01% sodium azide. |
| Form/Appearance | Liquid in 0.42% Potassium phosphate, 0.87% Sodium chloride, pH 7.3, 30% glycerol, and 0.01% sodium azide. |
| Storage | Maintain refrigerated at 2-8°C for up to 2 weeks. For long term storage store at -20°C in small aliquots to prevent freeze-thaw cycles. |
| Note | For research use only |
| Clonality | Polyclonal |
| Source | Rabbit |
| Uniprot ID | O15530, Q9Z2A0, O55173 |
| Entrez | 18607, 5170, 81745 |
| Dilution Range | WB: 1-500-1-1000, IHC-P: 1-100-1-200, IP: 1-10-1-100 |
| Expiration Date | 12 months from date of receipt. |



Western blot analysis of PDPK1 (Phospho-...



Immunohistochemical analysis of PDPK1 (P...