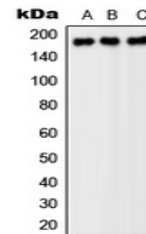


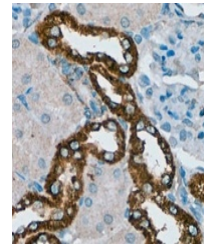
Product Datasheet

PDGFR beta antibody (orb214374)

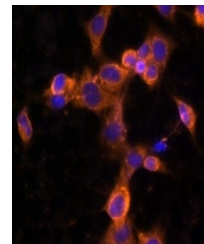
Description	Rabbit polyclonal antibody against PDGFR beta
Species/Host	Rabbit
Reactivity	Human, Mouse, Porcine, Rat
Conjugation	Unconjugated
Tested Applications	IF, IH, WB
Immunogen	KLH-conjugated synthetic peptide encompassing a sequence within the center region of human PDGFR beta. The exact sequence is proprietary.
Target	PDGFRB
Preservatives	Liquid in 0.42% Potassium phosphate, 0.87% Sodium chloride, pH 7.3, 30% glycerol, and 0.01% sodium azide.
Form/Appearance	Liquid in 0.42% Potassium phosphate, 0.87% Sodium chloride, pH 7.3, 30% glycerol, and 0.01% sodium azide.
Storage	Shipped at 4°C. Upon delivery aliquot and store at -20°C for one year. Avoid freeze/thaw cycles.
Note	For research use only
Clonality	Polyclonal
Source	Rabbit
Uniprot ID	P09619 , P05622 , Q05030
Entrez	5159 , 24629 , 18596
Dilution Range	WB: 1-500-1-1000
Expiration Date	12 months from date of receipt.



Western blot analysis of PDGFR beta expr...



Immunohistochemical analysis of PDGFR be...



Immunofluorescent analysis of PDGFR beta...