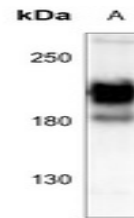


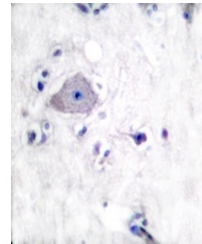
Product Datasheet

PDGFR alpha antibody (orb214373)

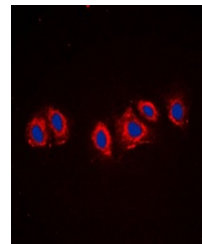
Description	Rabbit polyclonal antibody to PDGFR alpha
Species/Host	Rabbit
Reactivity	Human, Mouse, Porcine, Primate, Rat
Conjugation	Unconjugated
Tested Applications	IF, IH, WB
Immunogen	KLH-conjugated synthetic peptide encompassing a sequence within the C-term region of human PDGFR alpha. The exact sequence is proprietary.
Target	PDGFRA
Preservatives	Liquid in 0.42% Potassium phosphate, 0.87% Sodium chloride, pH 7.3, 30% glycerol, and 0.01% sodium azide.
Form/Appearance	Liquid in 0.42% Potassium phosphate, 0.87% Sodium chloride, pH 7.3, 30% glycerol, and 0.01% sodium azide.
Storage	Maintain refrigerated at 2-8°C for up to 2 weeks. For long term storage store at -20°C in small aliquots to prevent freeze-thaw cycles.
Note	For research use only
Clonality	Polyclonal
Source	Rabbit
Uniprot ID	P26618, P16234, P20786
Entrez	18595, 25267, 5156
Dilution Range	WB: 1-500-1-1000, IF/ICC: 1-100-1-500
Expiration Date	12 months from date of receipt.



Western blot analysis of PDGFR alpha exp...



Immunohistochemical analysis of PDGFR al...



Immunofluorescent analysis of PDGFR alph...