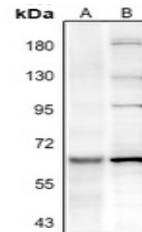


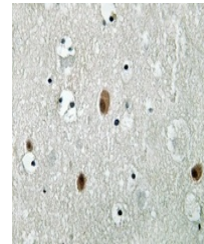
Product Datasheet

PAK3 (phospho-S154) antibody (orb214357)

Description	Rabbit polyclonal antibody to PAK3
Species/Host	Rabbit
Reactivity	Human, Mouse, Primate, Rat
Conjugation	Unconjugated
Tested Applications	IH, WB
Immunogen	KLH-conjugated synthetic phosphopeptide corresponding to residues surrounding S154 of human PAK3 protein. The exact sequence is proprietary.
Target	PAK3
Preservatives	Liquid in 0.42% Potassium phosphate, 0.87% Sodium chloride, pH 7.3, 30% glycerol, and 0.01% sodium azide.
Form/Appearance	Liquid in 0.42% Potassium phosphate, 0.87% Sodium chloride, pH 7.3, 30% glycerol, and 0.01% sodium azide.
Storage	Maintain refrigerated at 2-8°C for up to 2 weeks. For long term storage store at -20°C in small aliquots to prevent freeze-thaw cycles.
Note	For research use only
Clonality	Polyclonal
Source	Rabbit
Uniprot ID	Q62829 , Q61036 , O75914
Entrez	29433 , 18481 , 5063
Dilution Range	WB: 1-500-1-1000
Expiration Date	12 months from date of receipt.



Western blot analysis of PAK3 (Phospho-S...



Immunohistochemical analysis of PAK3 (Ph...