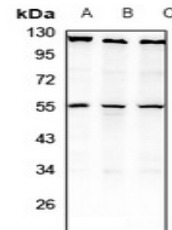


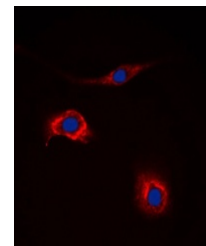
Product Datasheet

NPY2R antibody (orb214335)

Description	Rabbit Polyclonal antibody to NPY2R
Species/Host	Rabbit
Reactivity	Human
Conjugation	Unconjugated
Tested Applications	IF, WB
Immunogen	KLH-conjugated synthetic peptide encompassing a sequence within the N-term region of human NPY2R. The exact sequence is proprietary.
Target	NPY2R
Preservatives	Liquid in 0.42% Potassium phosphate, 0.87% Sodium chloride, pH 7.3, 30% glycerol, and 0.01% sodium azide.
Form/Appearance	Liquid in 0.42% Potassium phosphate, 0.87% Sodium chloride, pH 7.3, 30% glycerol, and 0.01% sodium azide.
Storage	Maintain refrigerated at 2-8°C for up to 2 weeks. For long term storage store at -20°C in small aliquots to prevent freeze-thaw cycles.
Note	For research use only
Clonality	Polyclonal
Source	Rabbit
Uniprot ID	P49146
Entrez	4887
Dilution Range	WB: 1-500-1-1000, IF/ICC: 1-100-1-500
Expiration Date	12 months from date of receipt.



Western blot analysis of NPY2R expression...



Immunofluorescent analysis of NPY2R staining...