
Product Datasheet

Nucleophosmin (phospho-T199) antibody (orb214332)

Description

Rabbit polyclonal antibody to NPM1

Species/Host

Rabbit

Reactivity

Human, Mouse, Rat

Conjugation

Unconjugated

Tested Applications

IF, IH, WB

Immunogen

KLH-conjugated synthetic phosphopeptide corresponding to residues surrounding T199 of human Nucleophosmin protein. The exact sequence is proprietary.

Target

NPM1

Preservatives

Liquid in 0.42% Potassium phosphate, 0.87% Sodium chloride, pH 7.3, 30% glycerol, and 0.01% sodium azide.

Form/Appearance

Liquid in 0.42% Potassium phosphate, 0.87% Sodium chloride, pH 7.3, 30% glycerol, and 0.01% sodium azide.

Storage

Maintain refrigerated at 2-8°C for up to 2 weeks. For long term storage store at -20°C in small aliquots to prevent freeze-thaw cycles.

Note

For research use only

Clonality

Polyclonal

Source

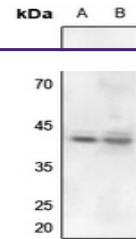
Rabbit

Uniprot ID
[P13084](#), [P06748](#), [Q61937](#)
Entrez
[18148](#), [4869](#), [25498](#)
Dilution Range

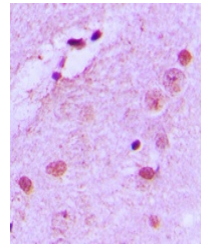
WB: 1-500-1-1000, IHC-P: 1-100-1-200, IF/ICC: 1-100-1-500

Expiration Date

12 months from date of receipt.



Western blot analysis of Nucleophosmin (...



Immunohistochemical analysis of Nucleoph...



Immunofluorescent analysis of Nucleophos...